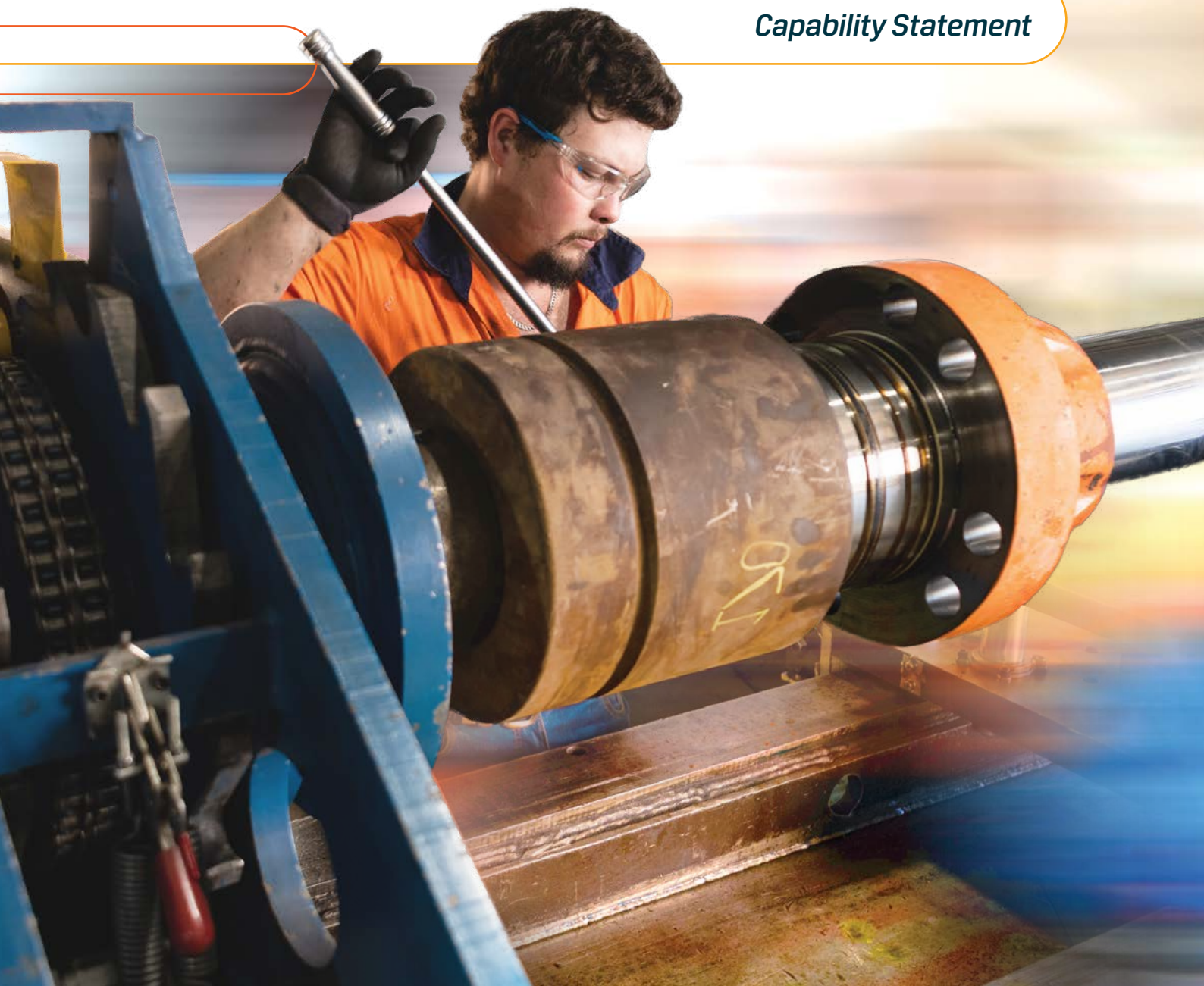




Firing on all cylinders

Capability Statement





Want to keep your operations firing on all cylinders?

We understand our customers work in unrelenting, unpredictable and fast-paced environments. Partnering with the Isadraulics team maintains momentum and keeps operations fluid, no matter what, for all types of heavy industries.

You need quality service and solutions, fast

- **We're "switched on" 24/7:** With a business built for speed, agility and mobility, we're always ready to meet challenges, anticipate and solve problems, and keep your schedules on track.
- **Insight breeds speed:** Faster service and solutions flow from our deep understanding of your industry and operations. Our technicians get to know you – and you have a consistent crew. No need for long explanations or translations: we just get it and get moving.
- **Quality, environment and safety is at our core:** With all our systems and processes ISO 9001, AS/NZS 4801, ISO 45001 accredited, enjoy the peace-of-mind of proven reliability and dependability. We digitally log every process and detail every component, so accurate records (and reassurance) are accessible anytime.

You need expertise and easy upskilling

- **Keep your focus on your job:** No need for specialist in-house capabilities when you can rely on our skilled hydraulic engineers and technicians.
- **Get up to speed, swiftly:** We can provide formal and informal consultation and clear onsite audits across hydraulic systems, parts and equipment.
- **Share know-how:** We share knowledge, insights, expertise and value so our customers thrive.

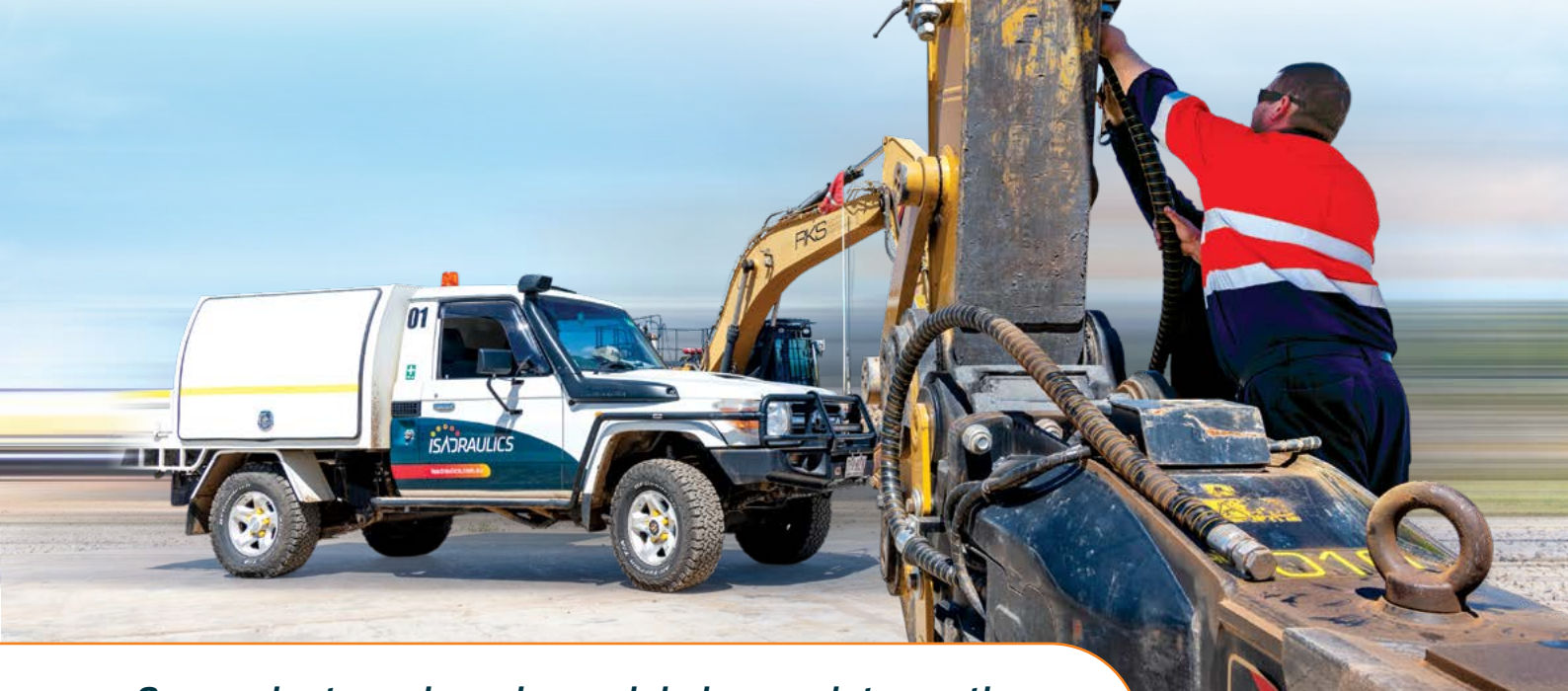
You need the right parts, now

- **Don't struggle with sourcing:** Even remote sites can source genuine OEM hydraulic products quickly and cost-effectively – with our strong commercial relationships, dedicated warehousing facility and efficient delivery.
- **Nothing's too hard:** Need a tricky, elusive or obsolete part? We'll find it, manufacture it or replicate it. Simple.

You need efficiency, always

- **Always rise to the challenge:** Our workshop's technical capabilities are unmatched in the region – to solve complex hydraulic needs, faster.
- **Speed that's spot on:** Our manufacturing, maintenance and testing workshop is supported by lean manufacturing principles. With the most advanced equipment, engineers and technicians, we're all about precision at pace.
- **Be the priority, every day:** We're irreplaceable when it comes to keeping our clients moving. The uninterrupted performance of your hydraulics systems is our top priority – every minute, every day – so you're never left waiting.





Our products and services minimise any interruptions and maximise peak performance for your every need

Field Services Team

Experienced help on hand

Our specialist field service crews are renowned for their experience and knowledge across North West Queensland. Our highly qualified hydraulic technicians and specialist service vehicles are available 24/7, when and where you need us. With the best mobile testing equipment, diagnostic tools and experienced hands, your Isadraulics team is the sure-fire partner on mine sites, worksites and properties.

You'll love the confidence of having a trusted partner and rock-solid technical back up, always ready to go



execution of large-scale projects including scoping, proposals, installations and maintenance



fast, accurate onsite diagnostics and repairs



onsite fitting of systems and parts



mobile audits, calibration, maintenance and servicing



unmatched onsite services and troubleshooting with our premium mobile 'toolkit' – including hydraulic flow turbines, particle counters, thermal imaging plus reporting and data management.

With coverage across 900 kilometres, you'll have the same highly experienced field service team available for your site – providing technical advice, repairs, installation, maintenance, monitoring, and emergency breakdown response. This consistency underpins our client focussed working relationships and deep understanding of specific operations and issues. And it's the secret to fast, smart and informed decisions and problem-solving to keep your systems running around the clock.



*Isadraulics has contributed to Queensland Metal's success by continuing to provide **ongoing rapid response**. It doesn't matter if it's three o'clock in the morning, the Isadraulics team is willingly onsite to support us and provide a **high quality service...***

**Rob Blyth, Queensland Metals
Contracts & Procurement Manager**

Workshop Services & Capabilities

Bespoke manufacturing, component overhauls, custom builds and long-term solutions.

Our fully equipped workshop is the regions largest and buzzes to solve problems, create solutions and deliver top quality results that keep our clients moving. Our capabilities include CAD software, full CNC machining capability, fabrication facility, quality machine hone, milling machines and lathes.

Whether you need to tweak existing equipment, produce a replica part or create a completely new part, our design,

engineering and manufacturing experts have it covered. Many clients need a tailored solution to get the job done right – with flow-on benefits for site efficiency, safety, accuracy and project deliverables. For older systems, we're known as reverse-engineering experts. We analyse original parts and manufacture new components to replicate them perfectly.

What does this all mean for you? Fast, economical, precise and dependable manufacturing of hydraulic systems that are perfect for your project or operation.

CAD design:

- Detailed engineering drawings to model parts and components on screen.
- Ideal for reverse engineering to replicate 'original parts' and ensure exceptional product quality and integrity by checking and resolving any stresses, strains or fitment problems.



CNC machine:

- The only hydraulic business in the region with this capability.
- The production rate and technologies deliver far more economical, efficient and precise production of large volumes.



Cylinder Hone machine:

- Precision machining for the precise surface finish and Ra value you need.
- Improves hydraulic performance in many ways – eg through ensuring precision fitting seals, resizing barrels, and removing glazed surfaces to extend seal and cylinder life.



Advanced testing, repair and overhaul services for longer lasting engineering solutions

Our workshop has leading tools and expertise to test and service components, pinpoint defects, repair and rebuild. We use critical problem solving and smart fault diagnosis to develop lasting engineering solutions – to get (and keep) you back on the job fast.

Our focus is extending the life, performance and reliability of your equipment with our advanced capabilities for servicing, testing and rebuilding hydraulic components.



A component rebuild and test centre for hydraulic pumps, motors, cylinders, valving and electronics



Seal optimisation for better cylinder performance



High Force Tooling testing and certification



Service and repair of existing components.

Cylinder Strip Bench:

- The largest cylinder strip bench in North-West Queensland
- Allows us to safely strip and re-assemble large hydraulic cylinders to OEM specifications for mining clients with incredible speed and ease.



Component Testing:

- Dedicated clean room with the ability to test cylinders, pumps and motors.



The Isadraulics service team have **exceptional communication skills**, they keep us abreast of any complications which may arise whilst working on our equipment whether it is to seek permission prior to starting work that may be high cost work or when they encounter unusual faults that we were not aware of.

They **regularly provide suggestions** on how they could make things more **streamline** and where EQL could make cost savings with regards to maintaining our equipment."

**Steve Donato, Ergon Energy
Fleet Technical Support Officer**





Product solutions – Stocked or sourced parts

Order from a wide range of in-stock products, let us source hard-to-find components, or we can design and manufacture replica or bespoke parts to fit your purpose

OEM Products

- Enjoy the benefits of our established OEM relationships with faster turnaround and the guarantee of genuine OEM supplied parts.
- Our warehouse holds a wide range of OEM parts ready for fast delivery: from accumulators, cylinders, pumps and seals to flow meters and pneumatics.



Unique Sourcing

- We're happy to hunt and search our network across the world - with a knack for sourcing unique, non-standard parts.



Engineered for you

- Or failing that we can design and manufacture replica or bespoke parts to fit your purpose through our reverse engineering capability.





Accreditation & certainty of quality, environment & safety

Your operations demand strict quality, environmental and safety compliance – so Isadraulics leads the industry in quality assurance systems and processes. All our systems and processes are ISO 9001 accredited – and our components and parts meet or exceed all relevant standards. In addition to this, we are also accredited AS/NZS 4801 and ISO 45001.

Our robust and meticulous systems include component identity and traceability – backed by our end-to-end digital systems for tracking projects and parts. Suppliers, technicians, tests and data connected to every individual component we create (or work on) is transparent and available at a glance.

For our clients, that means easy and precise asset management. For total peace of mind, every component and system is subject to rigorous testing (at maximum capacity) before being deemed site-ready for our clients. Be confident of the unwavering quality and proven compliance of your hydraulics parts and systems – for safety and performance you can count on.



SCI QUAL
INTERNATIONAL



SCI QUAL
INTERNATIONAL



SCI QUAL
INTERNATIONAL



The Complete Package

Underground, surface, industrial or mobile – we keep your equipment running and your site humming with fast product supply, installation, ongoing maintenance and support.

e sales@isadraulics.com.au

p 07 4743 9139

w isadraulics.com.au

**ISADRAULICS**